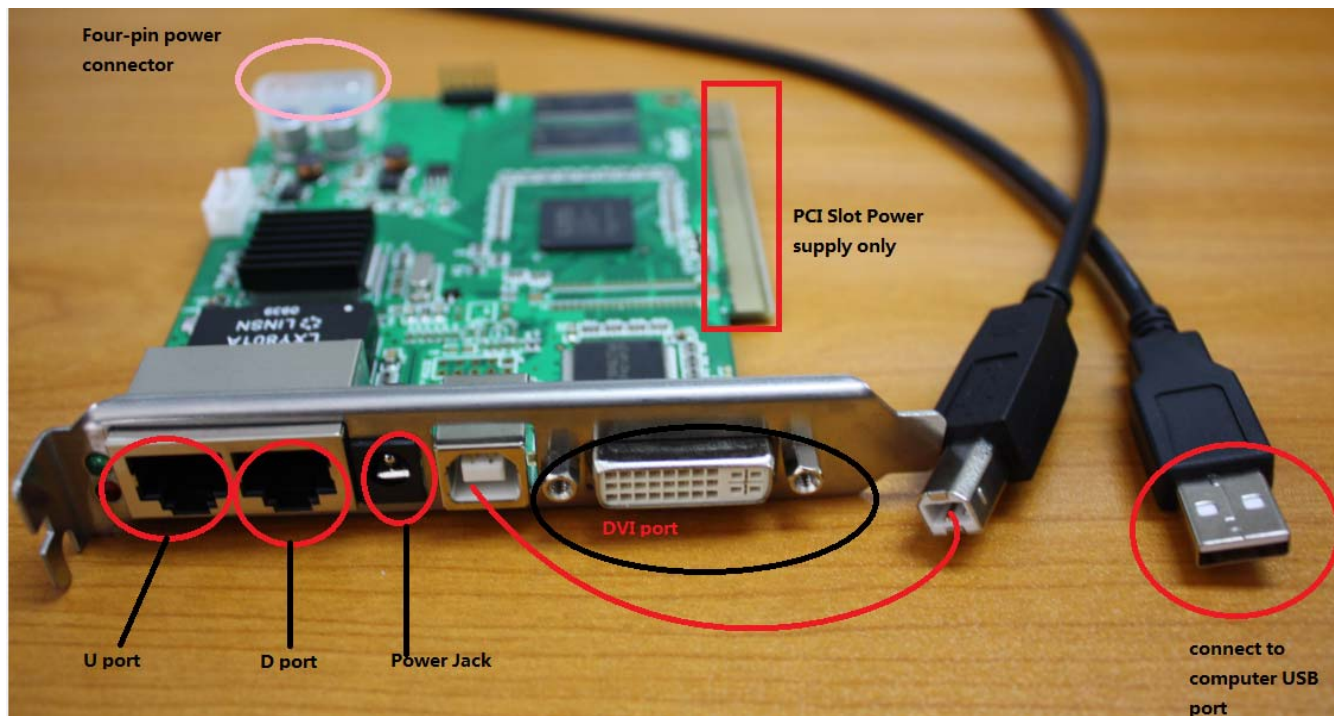


Linsn Control System Installation Instruction

Sending card



Power Supply

Methods: by Four-pin power connector/PCI slot Power supply/Power Jack (the middle pin of power jack is positive; the first pin of the four-pin power connector is positive, the fourth pin is near the PCI slot)

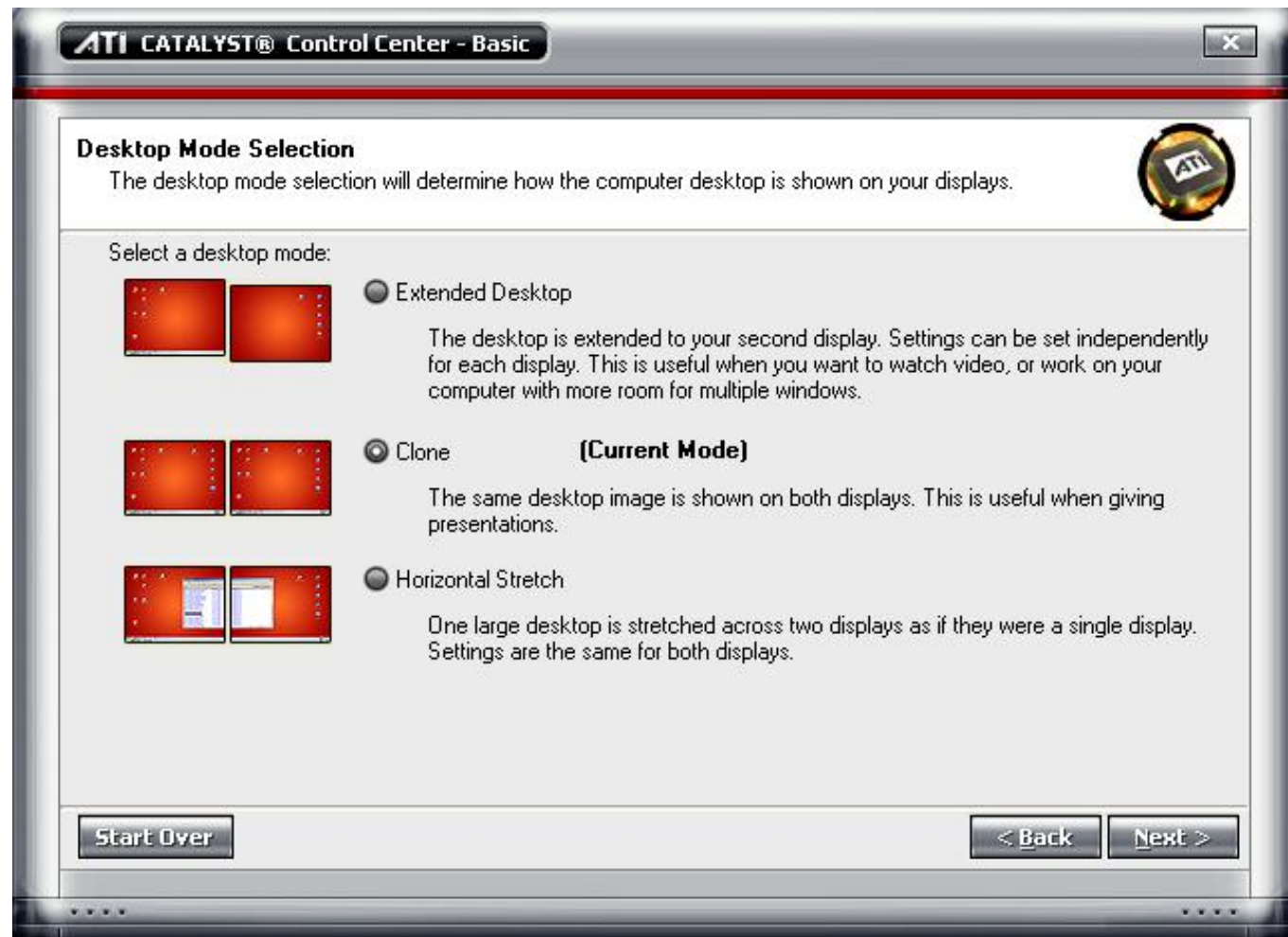
Specs: DC, 5V, 2A

Communication Cable

Connecting the sending card USB port and the computer USB port

DVI transmission Cable

DVI cable: Connecting the sending card DVI port and the **DVI-D** port of computer graphics card
Set the DVI output of computer graphics card to **CLONE** mode, so the sending card is copying the content on computer monitor to LED Display



Network cable RJ45 transmission cable (568B)

U port means Upper port; it carries the upper half of the height

D port means Down port; it carries the lower half of the height

For example: TS801D sending card, in 1280*1024 resolution mode,

U port carries 1280*512 (Start Y: 0-512)

D port carries 1280*512 (Start Y: 513-1024)

After installation:

The LED indicators of sending card will be **RED light on**, and **GREEN light flashing**.